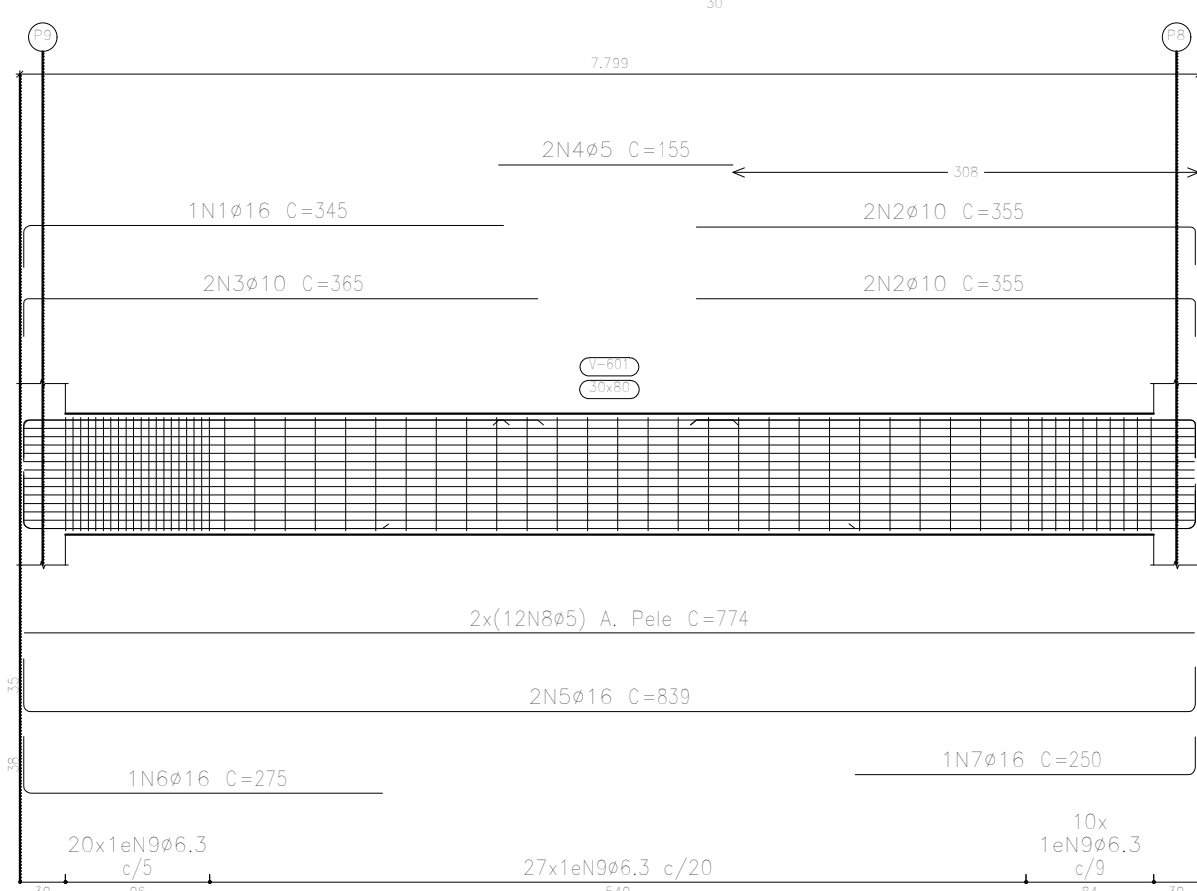
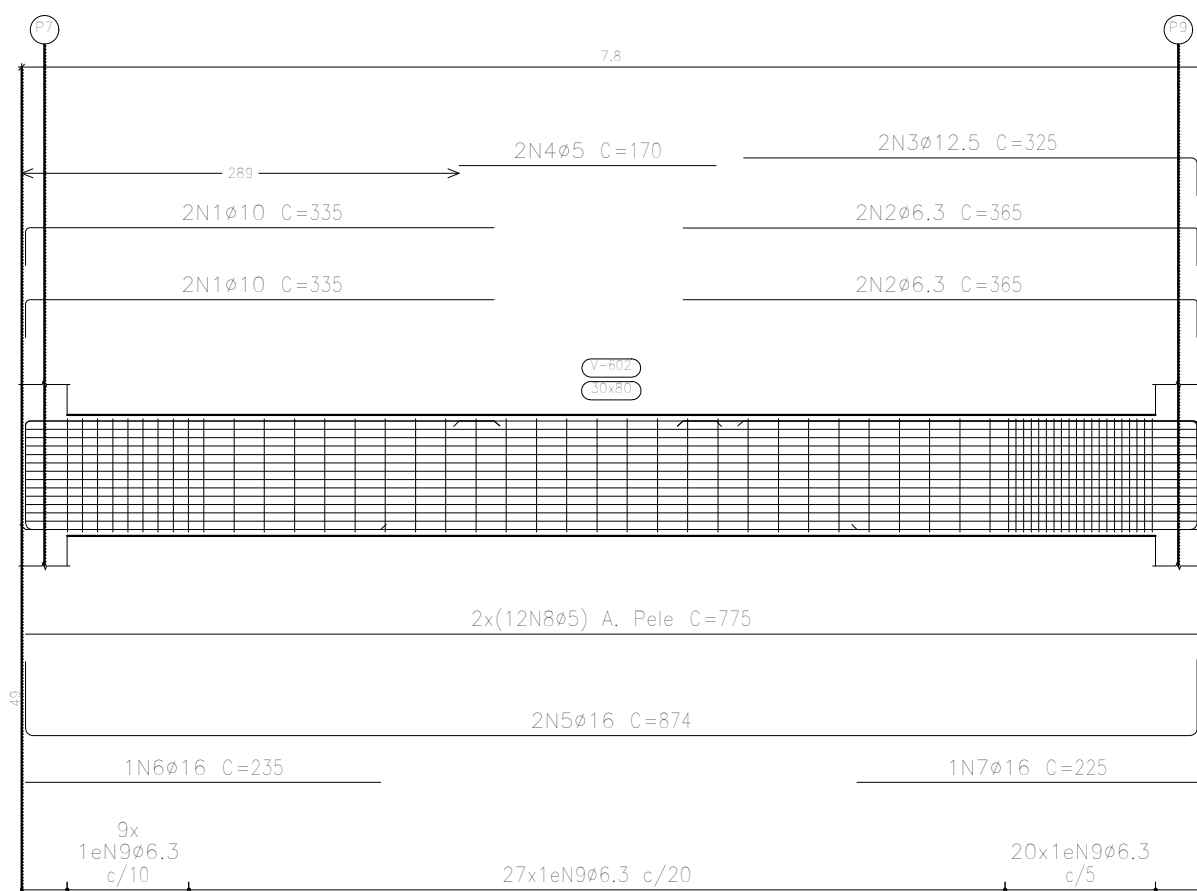


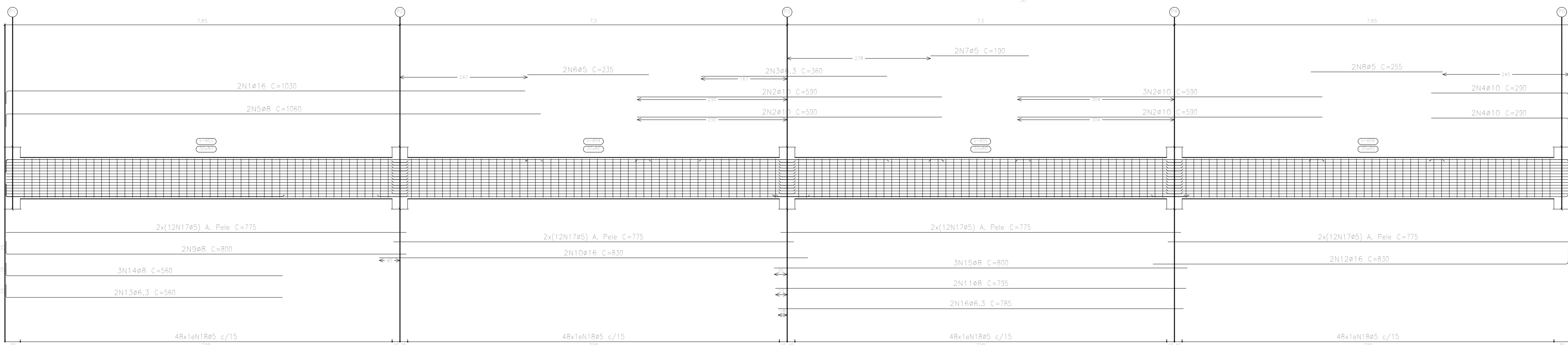
1.1
Escala viga: 1:50
Escala seção: 1:25



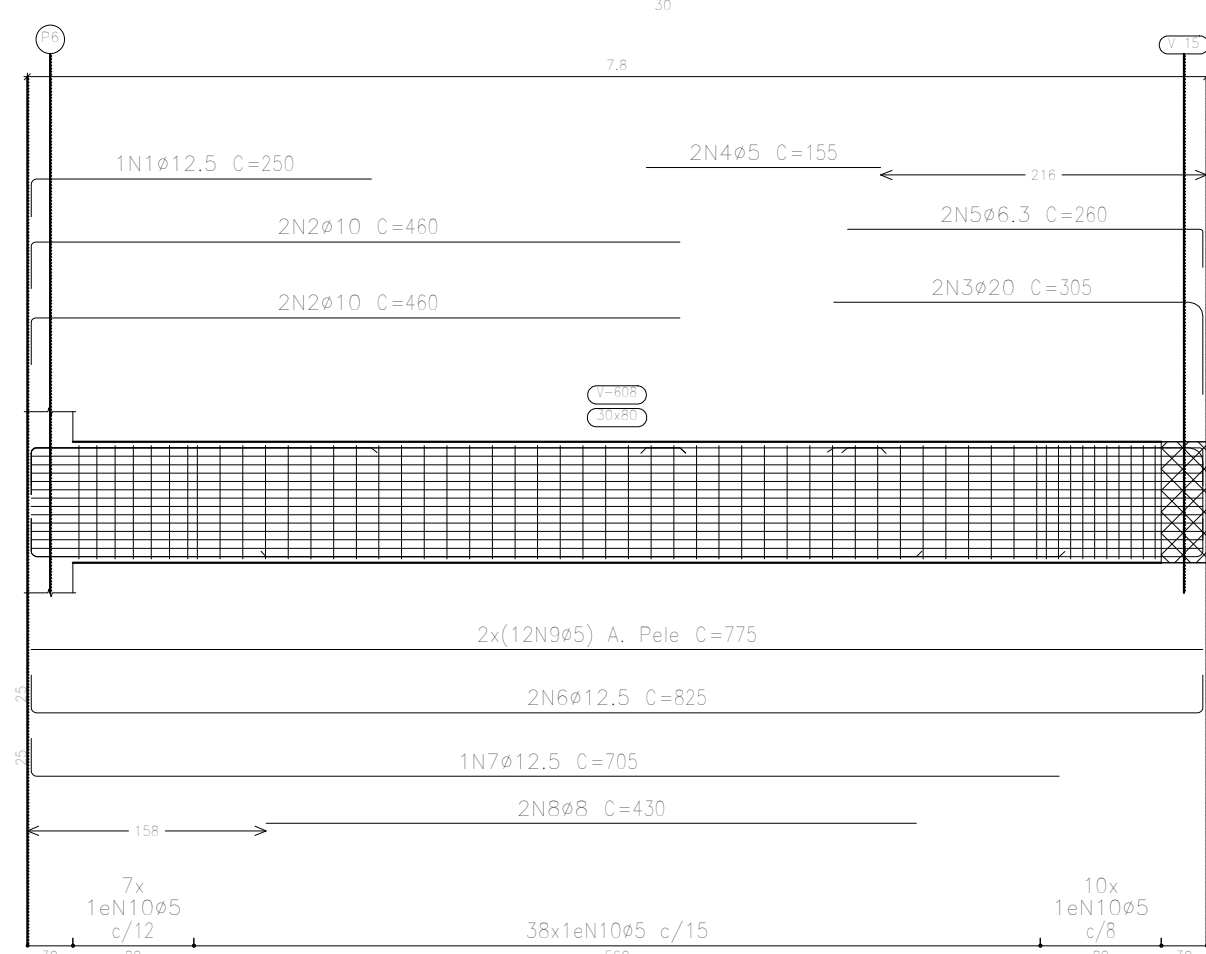
1.2
Escala viga: 1:50
Escala seção: 1:25



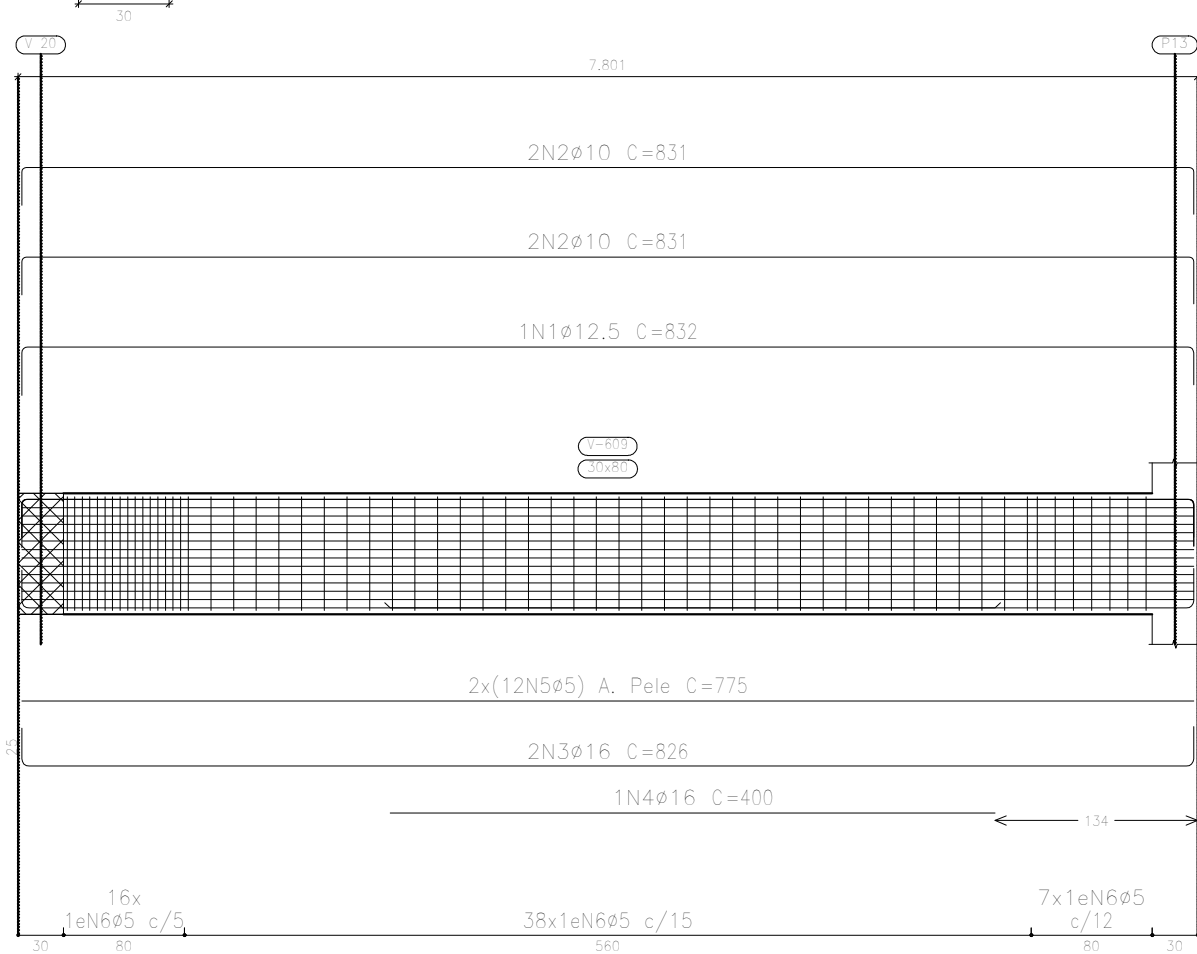
1.3
Escala viga: 1:50
Escala seção: 1:25



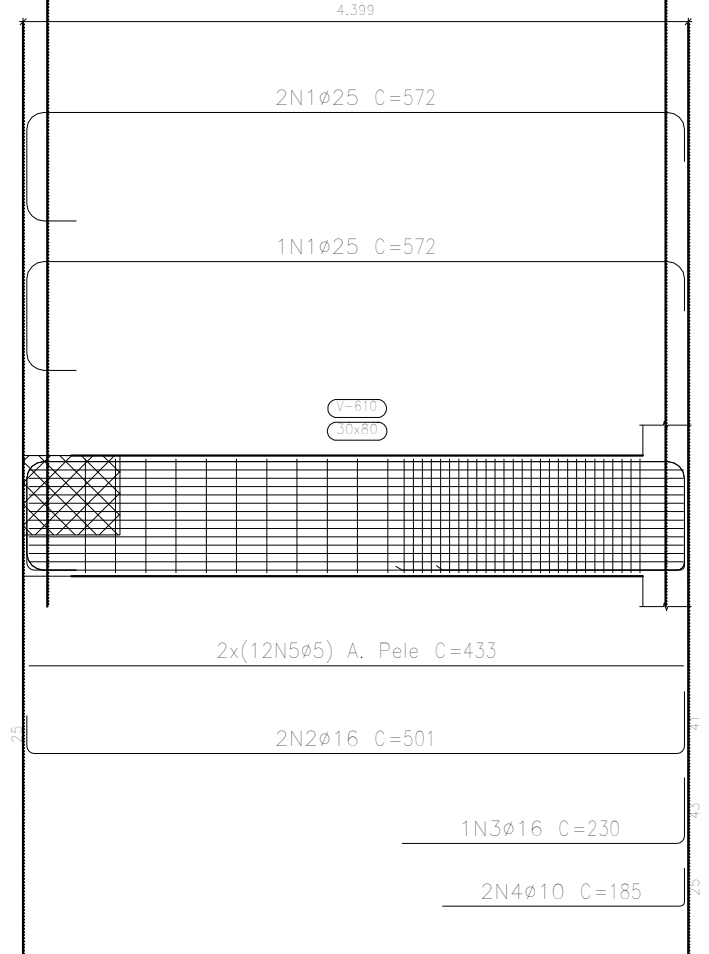
1.5
Escala viga: 1:50
Escala seção: 1:25



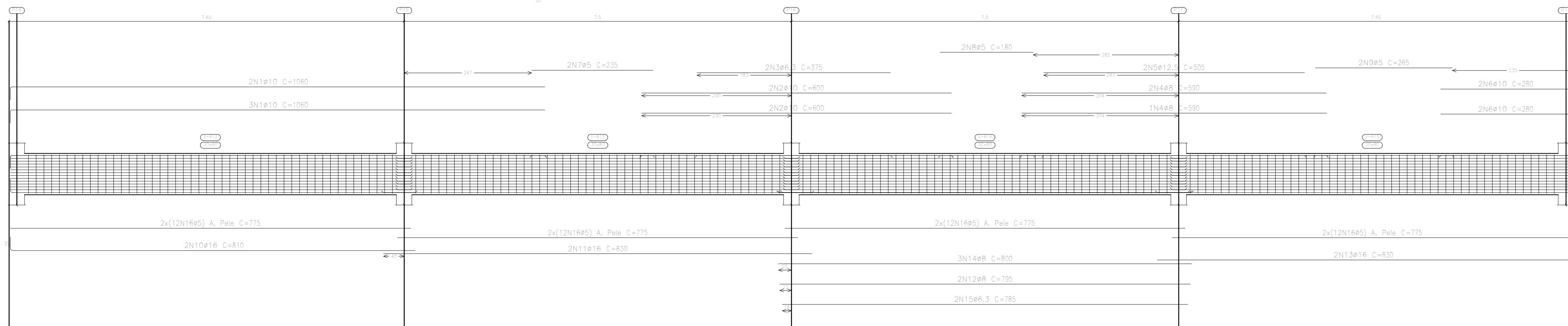
1.4
Escala viga: 1:50
Escala seção: 1:25



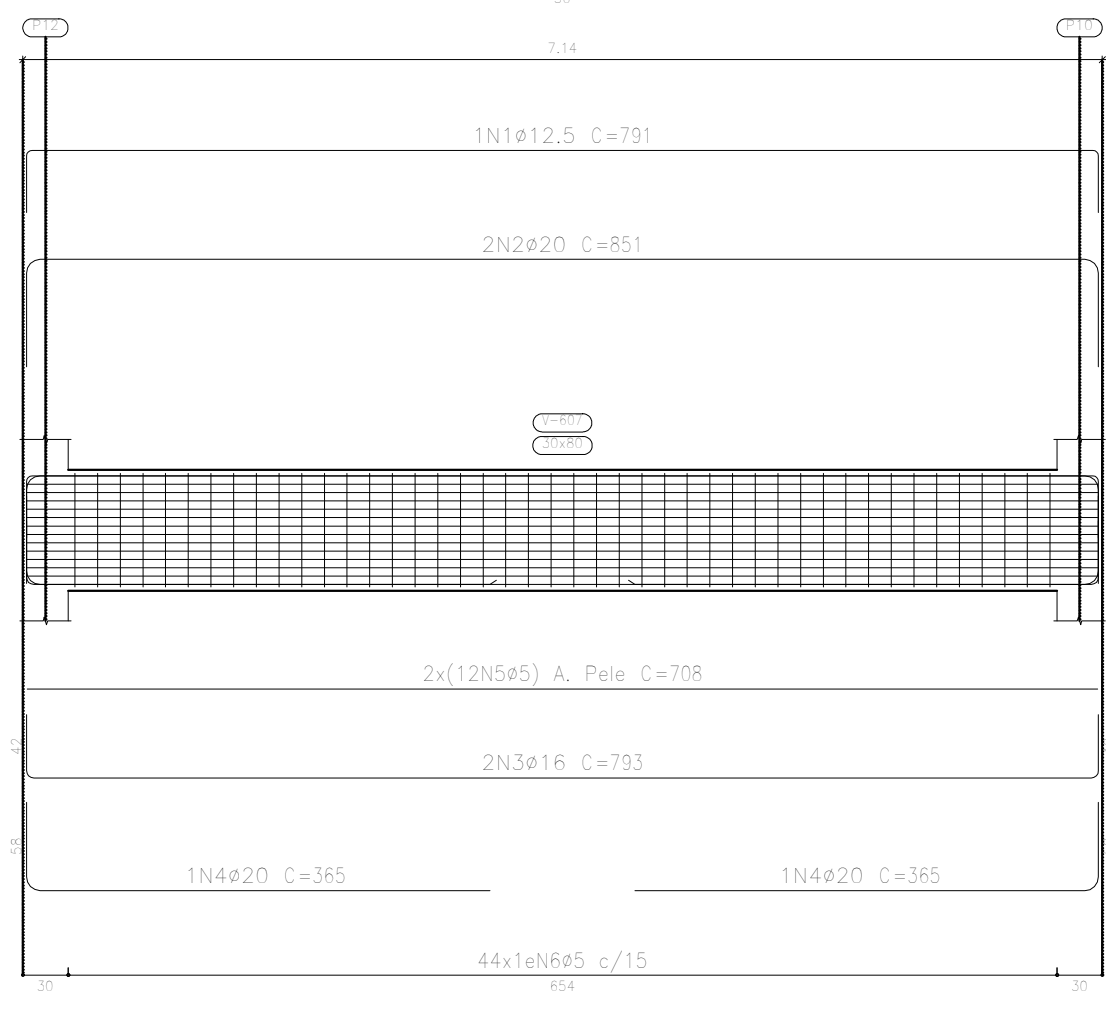
1.6
Escala viga: 1:50
Escala seção: 1:25



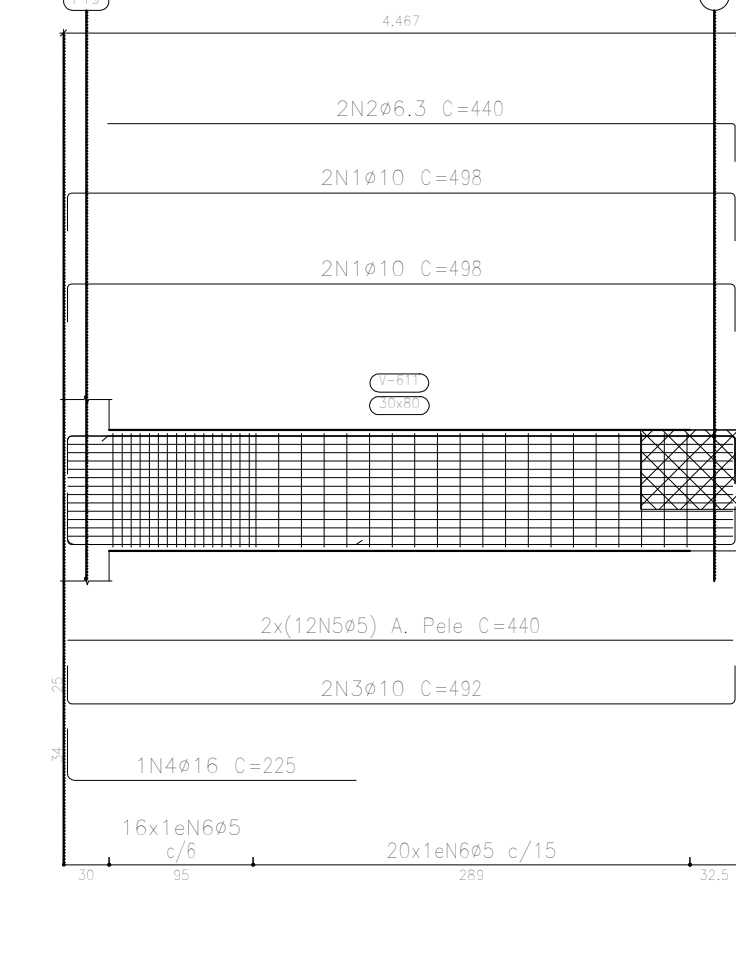
1.3
Escala viga: 1:50
Escala seção: 1:25



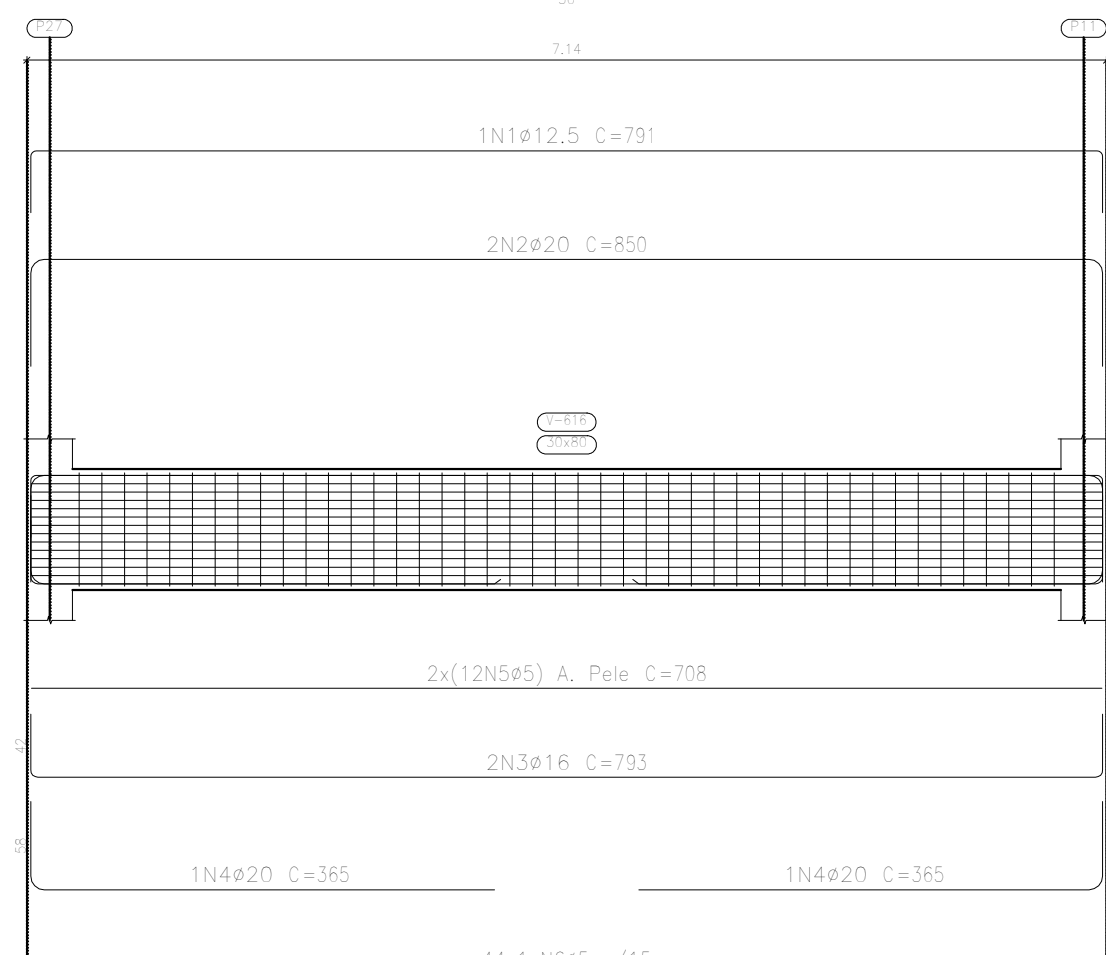
1.4
Escala viga: 1:50
Escala seção: 1:25



1.4
Escala viga: 1:50
Escala seção: 1:25



1.8
Escala viga: 1:50
Escala seção: 1:25



FAV2
Desenho de vigas
Concreto: C25, cond.desfav.
Aço das barras: CA-50 e CA-60
Aço das aberturas: CA-50 e CA-60
Escala vigas: 1:50
Escala aberturas: 1:25

Elemento	Pos.	Diam.	Q.	Esquema (cm)	Comp. (cm)	Totol (cm)	CA-50 (kg)	CA-60 (kg)
V.6	1	ø10	1		498	1992	12.3	
	2	ø6.3	4		440	880	2.2	
	3	ø10	2		492	984	6.1	
	4	ø16	2		225	225	3.6	
	5	ø5	24		440	10560		16.6
	6	ø5	34		208	7488		11.8
					Totol=1056	26.6	31.2	
V.9	1	ø10	3		1080	5390	32.7	
	2	ø10	4		600	2400	14.8	
	3	ø6.3	2		215	750	1.8	
	4	ø8	2		900	1700	7.0	
	5	ø12.5	2		505	1010	6.7	
	6	ø10	4		380	1120	6.8	
	7	ø5	2		235	470	0.7	
	8	ø5	2		360	360	0.6	
	9	ø5	2		395	135	0.8	
	10	ø16	2		910	1820	25.4	
	11	ø16	2		630	1660	26.2	
	12	ø8	2		795	1590	6.3	
	13	ø16	2		630	1660	26.2	
	14	ø8	2		800	2000	9.5	
					Totol=1056	187.6	193.8	
V.10	1	ø12.5	1		791	791	7.8	
	2	ø20	2		650	1700	61.9	
	3	ø16	2		793	1586	25.0	
	4	ø20	2		365	730	16.0	
	5	ø5	24		708	16992		26.7
	6	ø5	44		208	9152		14.4
					Totol=1056	101.8	45.2	
V.11	1	ø16	2		1030	2060	32.5	
	2	ø10	2		500	5310	32.7	
	3	ø6.3	2		360	720	1.8	
	4	ø10	4		290	1160	7.1	
	5	ø8	2		1040	2120	8.4	
	6	ø5	2		235	470	0.7	
	7	ø5	2		190	380	0.6	
	8	ø5	2		255	510	0.8	
	9	ø8	2		800	1600	6.3	
	10	ø16	2		630	1660	26.2	
	11	ø8	2		795	1590	6.3	
	12	ø16	2		630	1660	26.2	
	13	ø6.3	2		560	1120	2.8	
	14	ø8	2		560	1680	6.6	
	15	ø8	3		800	2400	9.5	
	16	ø6.3	2		785	1570	0.6	
	17	ø5	36		775	2440		16.6
	18	ø5	192		208	39936		62.7
					Totol=1056	187.1	193.8	
					ø6.3	670	434.6	
					ø8	100.0	6.0	
					ø6	44.5	0.0	
					ø10	100.0	0.0	
					ø12.5	81.7	0.0	
					ø16	25.4	0.0	
					ø20	62.5	0.0	
					ø25	72.7	0.0	
					Totol	716.6	474.6	

Elemento	Pos.	Diam.	Q.	Esquema (cm)	Comp. (cm)	Totol (cm)	CA-50 (kg)	CA-60 (kg)
V.12	1	ø16	1		345	345	5.4	
	2	ø10	4		250	1000	9.8	
	3	ø10	2		365	730	4.5	
	4	ø5	2		155	310	0.5	
	5	ø16	2		839	1678	26.5	
	6	ø16	1		275	275	4.3	
	7	ø16	1		250	250	3.9	
	8	ø5	24		774	18576		29.2
	9	ø6.3	2		210	1170	25.3	
	10	ø10	4		335	1340	6.1	
	11	ø10	4		335	1340	6.1	
	12	ø6.3	4		365	1460	3.6	
	13	ø12.5	2		325	650	6.3	
	14	ø5	2		170	340	0.5	
	15	ø16	2		874	1748	27.6	
	16	ø16	2		235	235	3.7	
	17	ø16	1		225	225	3.6	
	18	ø5	24		775	18600		29.0
					Totol=1056	20.1	32.7	
V.13	1	ø16	2		1030	2060	32.5	
	2	ø10	2		500	5310	32.7	
	3	ø6.3	2		360	720	1.8	
	4	ø10	4		290	1160	7.1	
	5	ø8	2		1040	2120	8.4	
	6	ø5	2		235	470	0.7	
	7	ø5	2		190	380	0.6	
	8	ø5	2		255	510	0.8	
	9	ø8	2		800	1600	6.3	
	10	ø16	2		630	1660	26.2	
	11	ø8	2		795	1590	6.3	
	12	ø16	2		630	1660	26.2	
	13	ø6.3	2		560	1120	2.8	
	14	ø8	2		560	1680	6.6	
	15	ø8	3		800	2400	9.5	
	16	ø6.3	2		785	1570	0.6	
	17	ø5	36		775	2440		16.6
	18	ø5	192		208	39936		62.7
					Totol=1056	187.1	193.8	

Elemento	Pos.	Diam.	Q.	Esquema (cm)	Comp (cm)	Totol (cm)	CA-50 (kg)	CA-60 (kg)
V.14	1	ø12.5	1		791	791	7.8	
	2	ø20	2		650	1702	42.0	
	3	ø16	2		793	1586	25.0	
	4	ø20	2		365	730	16.0	
	5	ø5	24		708	16992		26.7
	6	ø5	44		208	9152		14.4
					Totol=1056	101.8	45.2	
V.15	1	ø12.5	1		250	250	2.4	
	2	ø10	4		460	1840	11.3	
	3	ø20	2		395	610	15.0	
	4	ø5	2		155	310	0.5	
	5	ø6.3	2		280	560	1.3	
	6	ø12.5	2		825	1650	15.3	
	7	ø12.5	1		705	705	6.8	
	8	ø8	2		430	860	3.4	
	9	ø5	24		715	16920		29.2
	10	ø5	35		208	1140		18.0
					Totol=1058	81.7	52.5	
V.16	1	ø12.5	1		810	810	8.0	
	2	ø10	4		831	3324	25.5	
	3	ø16	2		826	1652	26.1	
	4	ø16	2		490	490	6.3	
	5	ø5	24		715	16920		29.2
	6	ø5	41		208	2896		15.0
					Totol=1058	81.0	54.0	
V.17	1	ø25	3		572	1716	86.1	
	2	ø10	4		437	1002	19.8	
	3	ø16	2		216	216	6.6	
	4	ø10	2		180	370	2.3	
	5	ø5	24		433	10392		16.1
	6	ø6.3	36		210	7980		15.5
					Totol=1058	116.0	17.0	